



RH100

Splitter

Product specification

Version: Ver.1.0

Statement

Dear user friend, thanks for choosing SHENZHEN SYSOLUTION TECHNOLOGY CO.,LTD (hereinafter referred to as Sysolution) as your LED advertising equipment control system. The main purpose of this document is to help you quickly understand and use the product. We strive to be precise and reliable when writing the document, and the content may be modified or changed at any time without notice.

Copyright

The copyright of this document belongs to Sysolution. Without the written permission of our company, no unit or individual may copy or extract the content of this article in any form.

Trademark



is a registered trademark of Sysolution.

Update Record

No.	Version	Updates	Revision Date
1	Ver.1.0	Initial Release	2024.08.28

The document is subject to change without prior notice.

SHENZHEN SYSOLUTION TECHNOLOGY CO., LTD.

Product Brief

The RH100 splitter is a gigabit to 100Mbps splitter independently developed by Xixun for the LED display industry. In order to solve the problem of traditional multi interface input and output of display screens, combined with the company's self-developed D60-B1S series receiving card, it can achieve large screen signal transmission with only 2-core Category 5e twisted pair cables, allowing the power supply and wiring of the display screen to be combined into one; A single machine can carry up to 490000 pixels and has powerful processing capabilities to effectively improve load utilization. It has strong signal transmission and processing capabilities, ultra stable performance, and ultra-high cost-effectiveness.

Product Features

1. 1 RJ45 network port input, 1 network port output, can be cascaded arbitrarily
2. 8 100 Mbps network port outputs to D60-B1S series receiver card
3. Bidirectional loop backup function
4. Multi-computer cascade splicing function
5. Support the upper computer software to monitor the operating parameters and status
6. Support configuration parameters readback
7. Support gigabit network BER testing
8. Support offline keystroke testing
9. Stand-alone maximum support 491520 pixel points
10. 8 100 megabit network ports, each port supports 61440 pixels, carry any load within the sending card area

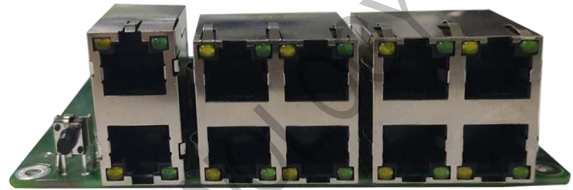
11. Support splitter static parameter storage, support splitter security upgrade

Applicable Scene

It can be widely used in light bar screen, grid screen and light decoration screen.

SHENZHEN SYSOLUTION TECHNOLOGY CO., LTD.

Product Picture

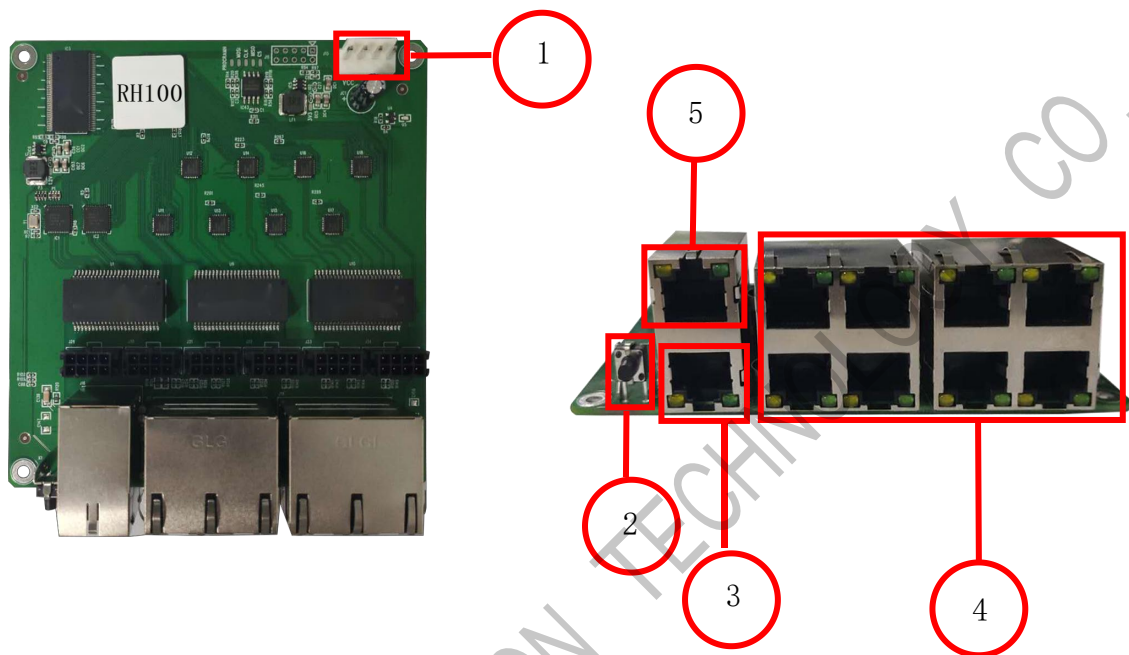


Uploading Capacity

Capacity	Whole Card	491520 pixels
	Single Port	61440 pixels
Capacity	Width	0—2048 pixels
	Height	0—2048 pixels
Offset Range	Width	0—2048 pixels
	Height	0—2048 pixels

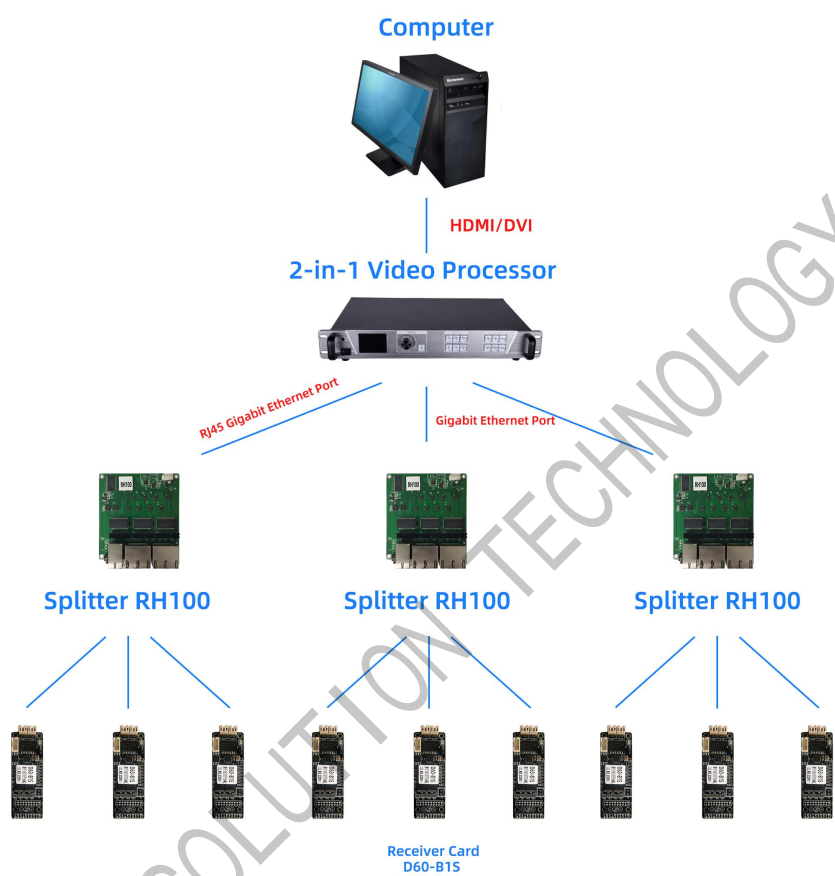
Interface Definition

Front panel



Front Panel Description		
No.	Name	Description
1	Power supply interface	5V power supply interface
4	OU1-OUT8	8 100Gb signal output to D60-B1S series receiver card
3	IN Interface	Input signal, signal input from the sending card Master operating status indicator
5	LINK Interface	Output to the next subcontrol card
2	Button	Test button

System Diagram



Indicator Description

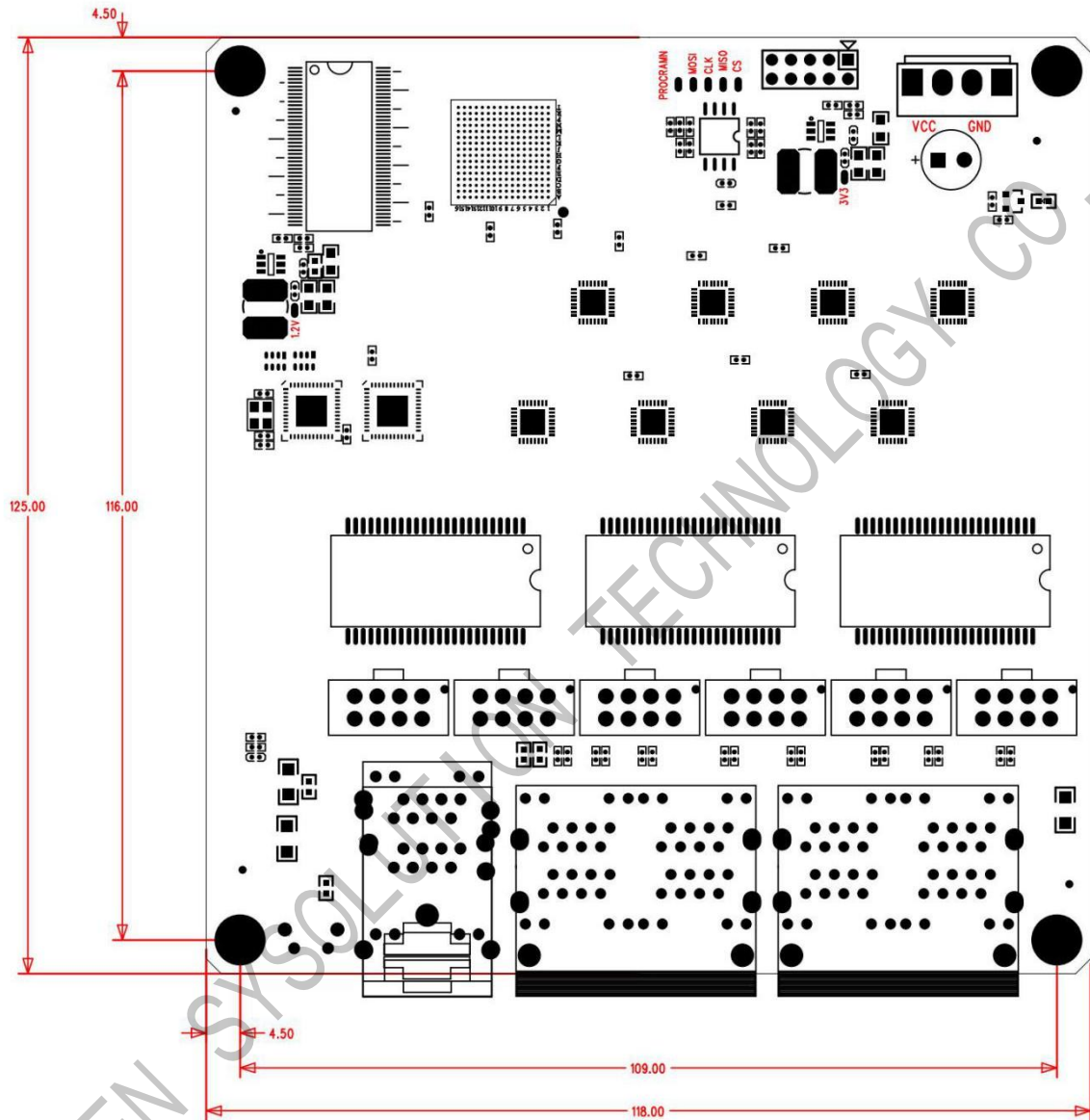
Indicator light	Instruction	
OUT1-OUT8	Yellow light always on	The yellow light is always on when power on.
	No light	Power supply is not normal
	Flashing	Indicate that the splitter and receiver card communicates with each other normally
IN	Always on	The yellow light is always on when power on
	Uniform slow flash	The receiver card works normally, the network cable is connected normally, and there is no DVI signal input.
	Uniform fast flash	The receiver card works normally, the network cable is connected normally, and there is DVI signal input.
	Always off	No Gigabit network signal
	fast flash 3 times at intervals	The receiver card is working properly, the network cable loop is connected, and there is a DVI signal input.
LINK	Always on	The yellow light is always on when power on.

	Uniform slow flash	The receiver card works normally, the network cable is connected normally, and there is no DVI signal input.
	Uniform fast flash	The receiver card works normally, the network cable is connected normally, and there is DVI signal input.
	Always off	No Gigabit network signal
	fast flash 3 times at intervals	The receiver card is working properly, the network cable loop is connected, and there is a DVI signal input.

Working Parameters

Electrical Parameters	Input Voltage	5V
Working Environment	Operating Temperature	-40°C - 80°C
	Operating Humidity	10%RH-90%RH non-coagulation
Overall Dimension	125mm X 118mm (L x W)	

Dimension



Unit: mm

Note

1. The working voltage of this product is 5V.
2. Prohibit liquid, metal fragments and other conductive objects to be immersed inside the device, so as not to cause safety accidents.
3. Please use the device in a dry and clean environment.